



### Extended Range Weather Forecast

#### For Himachal Pradesh

Date of issue: 18<sup>th</sup> November 2021

(Validity: 19<sup>th</sup> November 2021 – 02<sup>nd</sup> December 2021)

#### 1. Post Monsoon Status:

Weather was mainly dry over the state of Himachal Pradesh.

Minimum Temperatures were below 1°C from the normals whereas Maximum temperatures were normal.

#### 2. Temperature:

**Highest Maximum : 29.3 °C ( Una ) on 14<sup>th</sup> November 2021**

**Lowest Minimum : -4.2 °C (Keylong ) on 16<sup>th</sup> November 2021**

#### 3. Chief Amount of Precipitation events over previous week : NIL

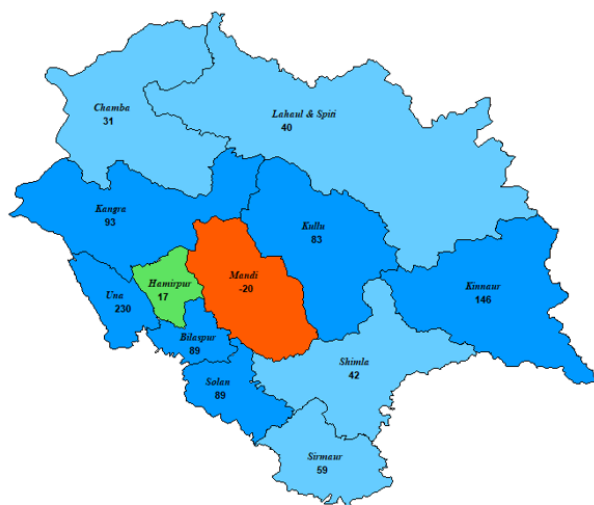
#### 4. Major Snowfall: NIL

### Realized Precipitation

#### Post Seasonal Rainfall (01<sup>st</sup> October to 18<sup>th</sup> November 2021) INDIA METEOROLOGICAL DEPARTMENT MC SHIMLA

Rainfall % Departures from the Long Period Averages  
for Districts in HIMACHAL PRADESH

PERIOD : 01.10.2021 - 18.11.2021



LEGEND: ■ L. EXCESS (+60% OR MORE) ■ EXCESS (+20% TO +59%) ■ NORMAL (+19% TO -19%)  
■ DEFICIENT (-20% TO -59%) ■ L. DEFICIENT (-60% TO -99%) ■ NO RAIN (-100%) ■ NO DATA

#### Weekly Rainfall (12<sup>th</sup> November to 18<sup>th</sup> November 2021) INDIA METEOROLOGICAL DEPARTMENT MC SHIMLA

Rainfall % Departures from the Long Period Averages  
for Districts in HIMACHAL PRADESH

WEEK ENDING ON : 18.11.2021

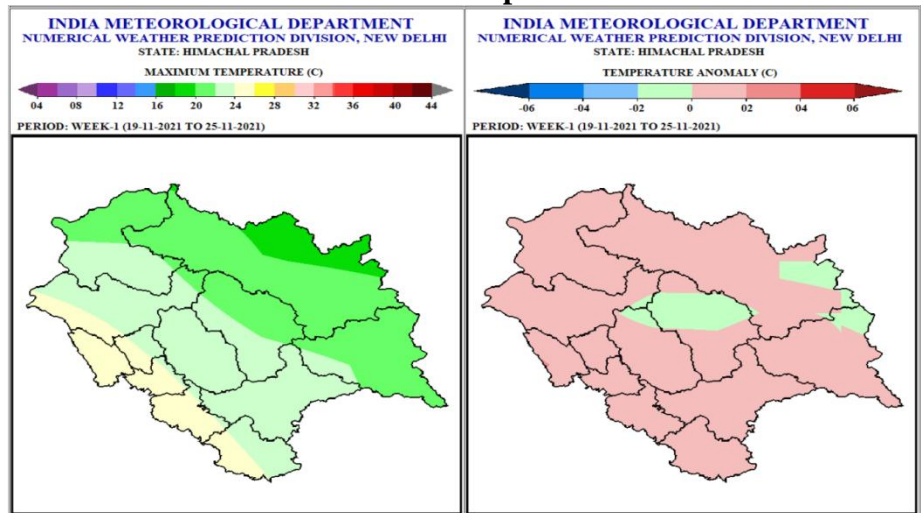


LEGEND: ■ L. EXCESS (+60% OR MORE) ■ EXCESS (+20% TO +59%) ■ NORMAL (+19% TO -19%)  
■ DEFICIENT (-20% TO -59%) ■ L. DEFICIENT (-60% TO -99%) ■ NO RAIN (-100%) ■ NO DATA

5. Weather Forecasts & warning for two weeks:  
(19<sup>th</sup> November 2021 – 02<sup>nd</sup> December 2021)

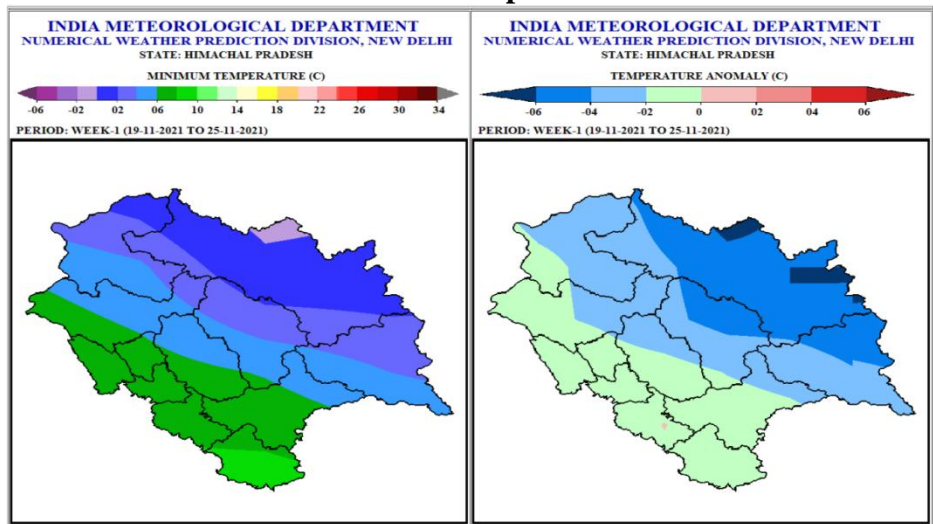
Week 1: 19<sup>th</sup> November 2021 - 25<sup>th</sup> November 2021

Maximum Temperatures



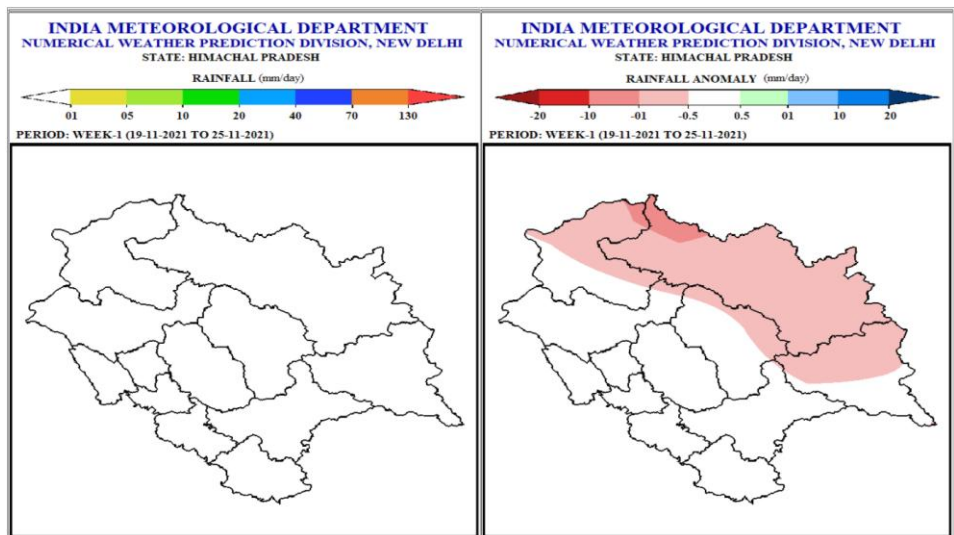
As per the map given above the forecast for Maximum temperatures for week 1 is predominantly Normal to above Normal (shown in light pink) in all the districts except Kullu Below normal.

Minimum Temperatures



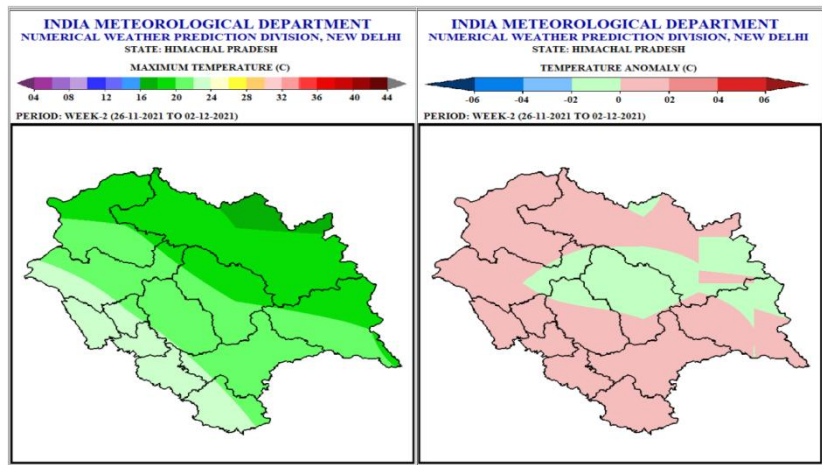
As per the map given above the forecast for minimum temperatures for week 1 is predominantly Normal to Below Normal (Shown in Green and Blue) in Himachal Pradesh.

Rainfall



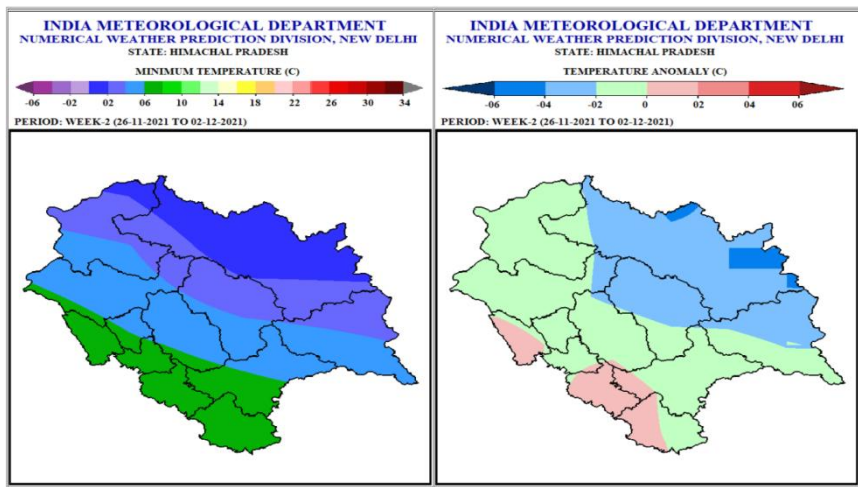
As shown in map above, the forecast for rainfall for week 1 in Himachal Pradesh is predominantly Normal to Below normal.

Maximum Temperatures



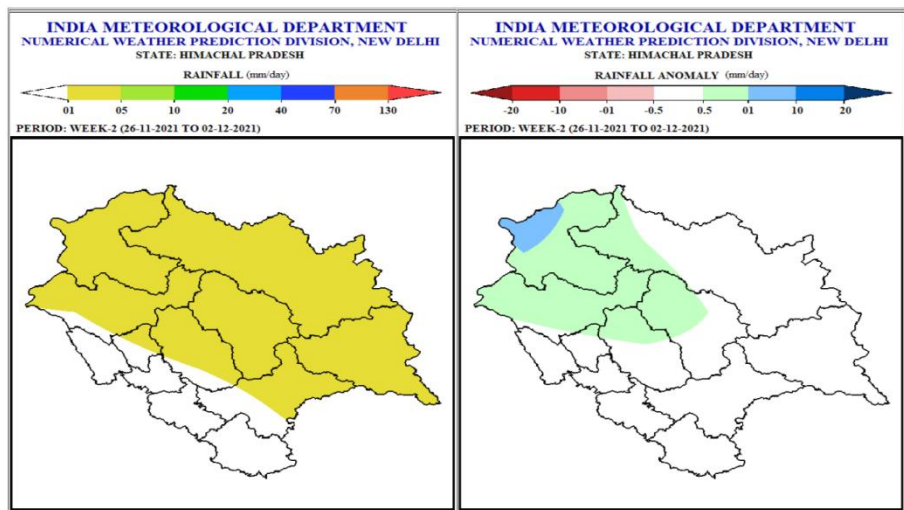
As per the map given above forecast for maximum temperatures for week 2 is predominantly Normal to Above Normal in Himachal Pradesh except some regions of Kullu, Knagra, Lahul-Spiti, Kinnaur and Mandi.

Minimum Temperatures



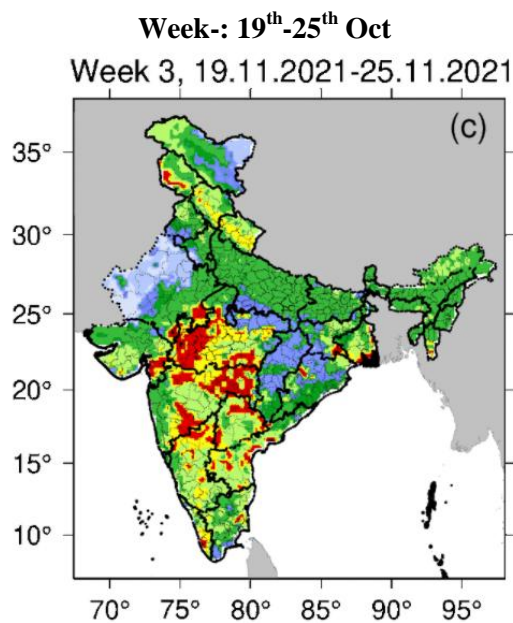
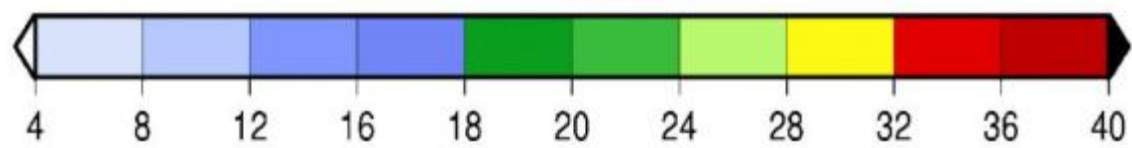
As per the map given above the forecast for minimum temperatures for week 2 is normal to Below Normal in all districts except Una, Solan and Sirmaur of H.P where it is above Normals.

Rainfall

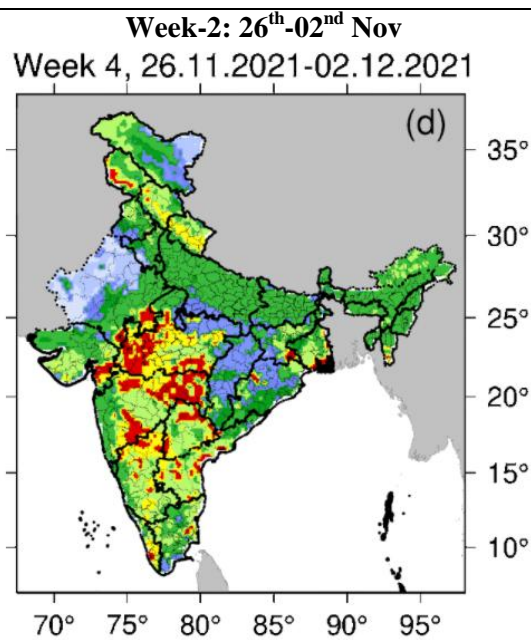


As per the map given above the forecast for rainfall for week 2 is predominantly Normal to below Normal in the state.

6. Weekly Soil Moisture (%)



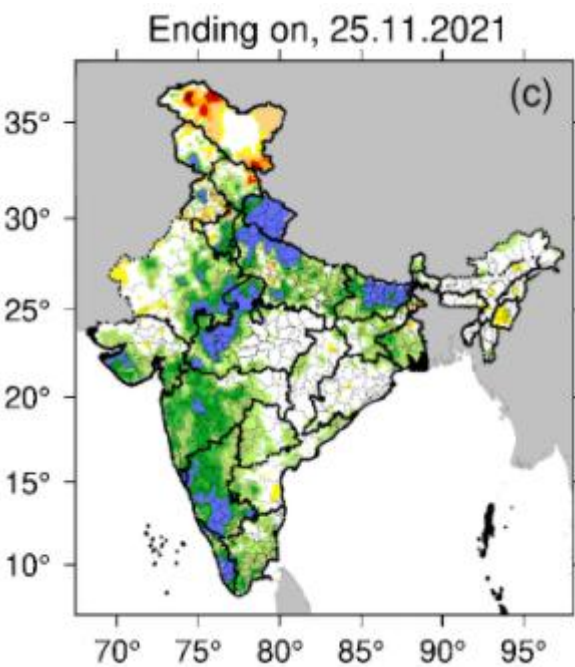
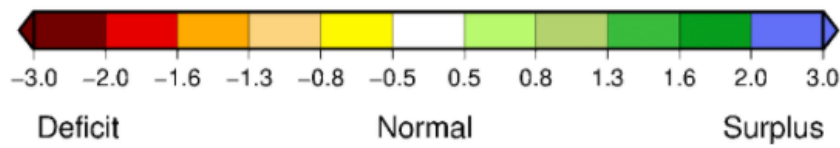
As shown in the map given above, for week I, the weekly moisture percentage is between 18-24 for Kinnaur, Eastern region of Lahul and Spiti, 24-32 for the remaining areas.



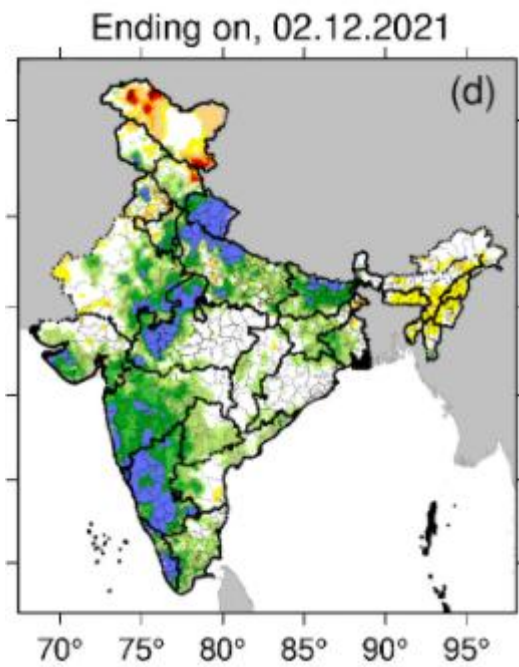
As shown in the map given above, for week II, the weekly moisture percentage is between 18-24 for Kinnaur, Eastern region of Lahul and Spiti, 24-32 for the remaining areas.



7. Standardized Runoff Index:

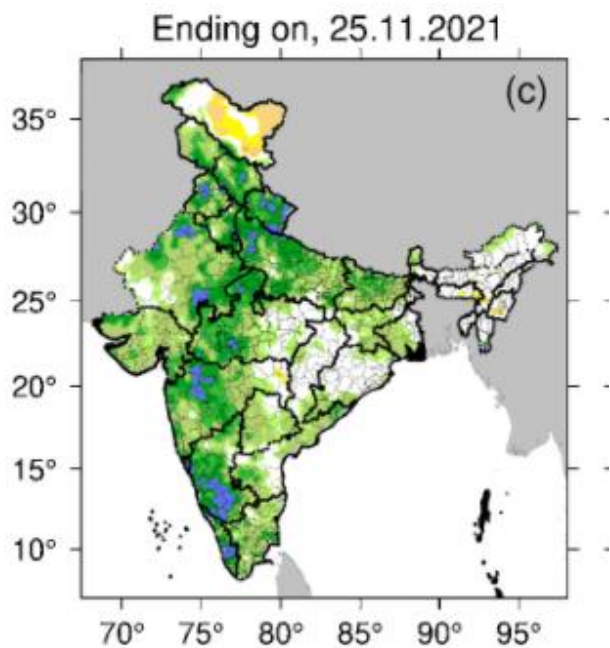
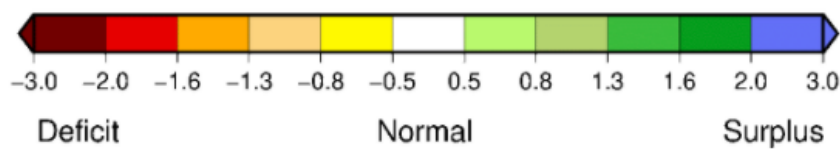


As shown in the map for week I, the SRI will be normal to surplus for all districts in the state of Himachal Pradesh, with a deficit of -0.5 to -0.8 in the region of Lahul Spiti.

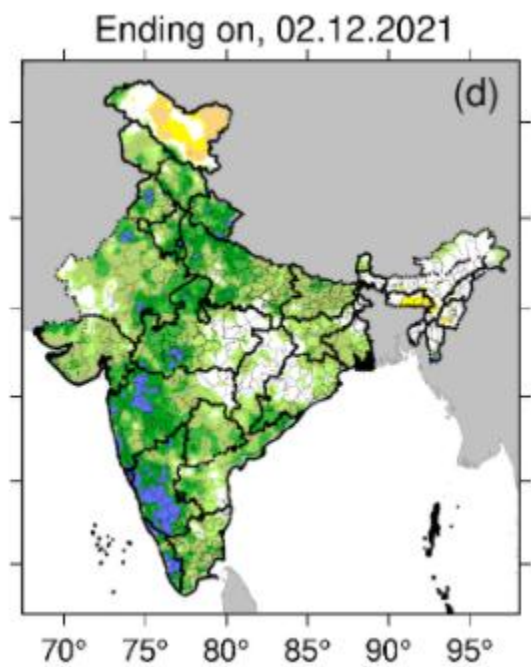


As shown in the map for week I, the SRI will be normal to surplus for all districts in the state of Himachal Pradesh, with a deficit of -0.5 to -0.8 in the region of Lahul Spiti.

8. Standardized Soil Moisture Index:




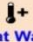
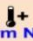






As shown in the map for week I, the SSI will be normal to surplus for all districts in the state of Himachal Pradesh.



As shown in the map for week I, the SSI will be normal to surplus for all districts in the state of Himachal Pradesh.

Note: Forecast/Warning for any day is valid from 0830 hours IST of that day till 0830 hours IST of next day

WARNING	PROBABILISTIC FORECAST		SPATIAL		RAINFALL INTENSITY	
WARNING(TAKE ACTION)	Terms	Probability of Occurrence	DRY	No Rainfall	Light	2.5-15.5 mm
ALERT (BE PREPARED)	Unlikely	<25%	ISOLATED	1-25%	Moderate	15.6-64.4 mm
WATCH (BE UPDATED)	Likely	25-50%	FEW	26-50%	Heavy	64.5-115.5 mm
NO WARNING (NO ACTION)	Very Likely	50-75%	MANY	51-75%	Very Heavy	115.6-204.4 mm
	Most Likely	>75%	MOST	76-100%	Extremely Heavy	≥204.5 mm

LEGENDS	
<b>WARNING</b>	<b>Probabilistic Forecast</b>
WARNING (TAKE ACTION)	Terms
ALERT ( BE PREPARED)	Probability of Occurrence (%)
WATCH (BE UPDATED)	Unlikely
NO WARNING ( NO ACTION)	Likely
	Very Likely
	Most Likely
 Rain/ Snow *	Heavy: 64.5 to 115.5 mm/cm *
	Very Heavy: 115.6 to 204.4 mm/cm *
	Extremely Heavy: > 204.4 mm/cm *
 Heat Wave	When maximum temperature of a station reaches ≥40° C for plains and ≥30° C for hilly regions
	(a) Based on Departure from normal
	Heat Wave: Maximum Temperature Departure from normal 4.5° C to 6.4° C.
	Severe Heat Wave: Maximum Temperature Departure from normal ≥6.5° C
	(b). Based on Actual maximum temperature
	Heat Wave: When actual maximum temperature ≥45°C.
	Severe Heat Wave: When actual maximum temperature ≥47°C
	( c ). Criteria for heat wave for coastal stations
	When maximum temperature departure is >4.5°C from normal. Heat Wave may be described provided maximum temperature ≥37°C
 Warm Night	When maximum temperature remains 40°C
	Warm Night: When minimum temperature departure 4.5 °C to 6.4 °C.
	Severe Warm Night: When minimum temperature departure >6.4 °C.
 Cold Wave	When minimum temperature of a station ≤10°C for plains and ≤0°C for hilly regions.
	(a). Based on departure
	Cold Wave: Minimum Temperature Departure from normal -4.5 °C to -6.4 °C.
	Severe Cold Wave: Minimum Temperature Departure from normal ≥ -6.5 °C
	(b) Based on actual Minimum Temperature (for Plains only)
	Cold Wave : When Minimum Temperature is ≤ 4.0 °C
	Severe Cold Wave: When Minimum Temperature is ≤ 2.0 °C
	( c ) For Coastal Stations
	When Minimum Temperature departure is ≤-4.5 °C or actual Minimum Temperature is ≤ 15 °C
 Cold Day	When minimum temperature of a station ≤10°C for plains and ≤0°C for hilly regions
	Based on departure
	Cold Day: Maximum Temperature Departure from normal -4.5 °C to -6.4 °C.
	Severe Cold Day: Maximum Temperature Departure from normal ≤ -6.5 °C
 Fog	Phenomenon of small droplets suspended in air and the horizontal visibility < 1km
	Moderate Fog: When the visibility between 500-200 metres
	Dense Fog: when the visibility between 50- 200 metres
	Very Dense Fog: when the visibility < 50 metres
 Thunderstorm	Sudden electrical discharges manifested by a flash of light (Lightning) and a sharp rumbling sound (thunder)
 Dust/Sand Storm	An ensemble of particles of dust or sand energetically lifted to great heights by a strong and turbulent wind.
 Frost	Ice deposits on ground
	Air temperature ≤4°C ( over Plains)

For latest Weather Bulletin and warnings kindly visit following links

Website: <https://mausam.imd.gov.in/shimla/>  
Facebook: <https://www.facebook.com/profile.php?id=100018411811087>  
Twitter- <https://twitter.com/himachalmausam>  
IG- [www.instagram.com/metcentresml/](http://www.instagram.com/metcentresml/)

Regards,  
Met Centre Shimla